

How Can Scholarly Research Influence Clinical Practice?

Leslie Van Dover, PhD, RN, PN & Shannon Fernando, BS, BSN, RN

Azusa Pacific University, Azusa, California, USA

Slide #27 – Understanding Mercy

✚ New Testament: "In Mark 10: 47, a blind beggar appeals to Jesus' mercy. Bartimaeus says, 'Jesus, Son of David, have mercy on me!' Bartimaeus cries out on the basis of Jesus' mercy, in hopes that he will heal him. Mercy then can bring forth miracles. Mercy can make the blind see. Therefore, divine mercy in the New Testament is perhaps more intimate than the divine mercy described in the Old Testament. The Old Testament mercy saves mankind, it represents salvation, the basis on which humans recover their relationship with God. However, mercy in the New Testament cares about the little details. It is a mercy infused with humility and a measure of grace that cares deeply about the specific ailments of God's people. This mercy is more accessible to God's people. This is the reason God's invasion of the human world through Jesus Christ was so pivotal. His people needed a mercy that reached down to the blind beggar within each person. This is the *éleos* of the New Testament. This is the mercy of Jesus Christ." - Shannon Fernando, 2011

Slide #29 – Appreciating Mercy

✚ Middle Ages: "This mercy is not only the powerful magnificence of God, but also the soothing, nurturing presence of Christ who was birthed by a human being. This alludes to the Mother Christ as described by Julian of Norwich. The scope of God's mercy is so vast that it includes divinity and humanity, father and mother. After all, the Father of Jesus is God and the mother of Jesus is Mary. Jesus being both divine and mortal embodies a mercy that has the power to save from death and nurture in life. This is the description of mercy by the Mystics. It is a mercy breaking traditions, gender boundaries, and even comprehension. It simultaneously elicits awe that goes beyond human understanding and familiarity, which somehow also intimately soothes the soul." – Shannon Fernando, 2011

Slide #33 - My New Identity: Nursing and Mercy

Modern Nursing Literature: "Mercy, consequently, is a calling. Nurses knowingly or unknowingly respond to a call to show mercy when caring for their patients. This mercy is revolutionary because it has a reciprocal and mutual nature. In showing mercy, nurses not only preserve their patients' humanity and dignity, but they also preserve their own. Mercy nurtures, preserves, and maintains the most beautiful aspects of humankind. There is room for a degradation of humanity when illness strikes. In these situations, mercy is often crowded out by despair, hopelessness, and suffering. However, if nurses choose to hear the call to show mercy, divine space is formed for mercy to rule. Mercy then, invades the patient room. It is at the bedside when nurses dispense medications. It is on the palms of both nurse and patient as they pray together. It is in the eyes of the patient longing to not only be healed, but to be understood. It is in the eyes of the nurse longing to not only heal, but to be healed." - Shannon Fernando, 2011

Figure 1. Faculty Support Student Learning

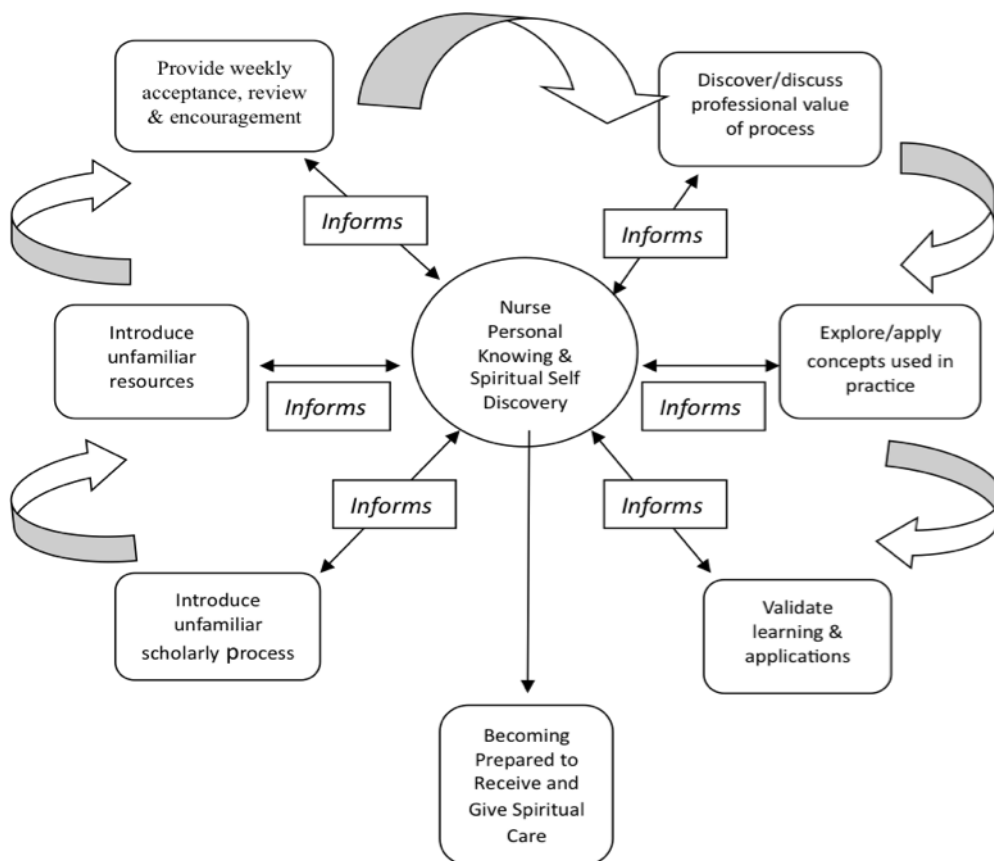


Figure 2. Students Experience Scholarly Process

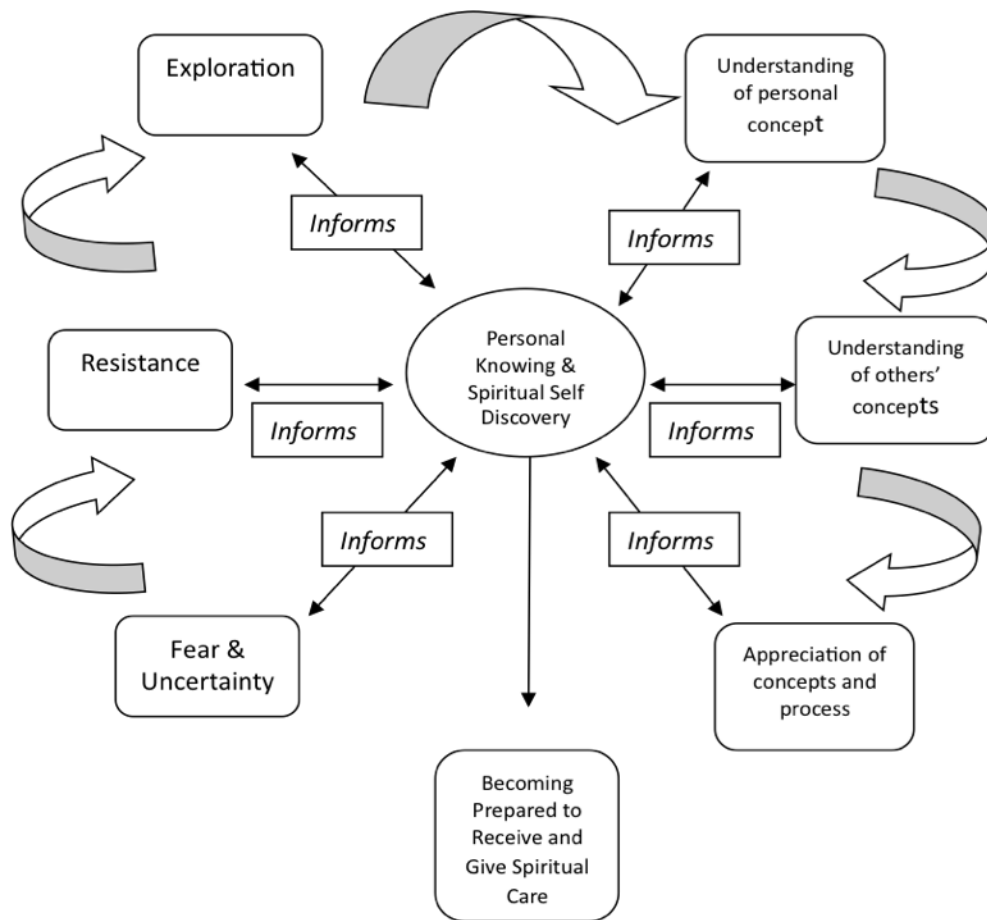


Table 1. Spiritual Assessment and Partial Care Plan for Diagnosis #3

Nursing diagnosis	Related to	Manifested by	Further Assessment
Type your diagnoses in these spaces.	Factors that <i>contribute to development</i> of this problem, or that cause it.	<i>Evidence</i> expressed verbally or non-verbally, that can be seen, heard, smelled, touched, or tasted.	
First Dx. Risk for Spiritual Distress (patient)	Fear of losing job and not able to support family	"Return to work as soon as possible and afraid of losing his job"	-What are your concerns about having to rest for 4-6 weeks? -What other than your job gives meaning to your life?
Second Dx. Potential for enhanced spiritual well-being (patient)	His health crisis	"Papa don't forget who loves you" Card and quotation	-When you face stress where do you look for help? -Are you currently involved in a faith or social community? <u>No</u> : Have you thought about getting involved? <u>Yes</u> : Do you have access to social groups/your community? How involved are you?
Third Dx. Spiritual anxiety (wife)	Husband's health crisis	"Anxious behaviors"	-What kind of spiritual support do you have? <u>None</u> : Are you interested in speaking with a spiritual counselor? <u>Has</u> : Do you have access to that support or source to receive comfort?

Main Diagnosis	Planning (Goals)	Intervention (What will you and others do?)	Rationale for intervention	Evaluation
Dx. #3 - Spiritual anxiety r/t husband's health crisis and resulting work situation	<u>If "Yes"</u> : She will identify one of her spiritual resources within one week. <u>If "No"</u> : She will identify one social support person or group within one week.	-Facilitate meaningful religious practices -Refer wife to spiritual expert (her own clergy or hospital chaplain)	-To remind the client of available spiritual resources - To get her to shift focus away from her anxious thoughts.	She identifies resources to decrease her anxiety.